

DOD

VOL-4

FLIGHT INFORMATION PUBLICATION
(TERMINAL)

LOW ALTITUDE UNITED STATES

**AIRPORT DIAGRAMS
INSTRUMENT APPROACH PROCEDURES
DEPARTURE PROCEDURES
RADAR INSTRUMENT APPROACH MINIMUMS**

EFFECTIVE 15 MAY 2003
TO 10 JUL 2003
TCN EFFECTIVE 12 JUN 2003

SPECIAL NOTICE
U.S. TERMINALS REALIGNMENT
10 JUL 2003. SEE IFR-S

Consult NOTAMS for latest information



PUBLISHED IN ACCORDANCE WITH INTER-AGENCY AIR CARTOGRAPHIC
COMMITTEE SPECIFICATIONS AND AGREEMENTS APPROVED BY

DEPARTMENT OF DEFENSE
FEDERAL AVIATION ADMINISTRATION



Published by
NATIONAL IMAGERY AND MAPPING AGENCY
ST. LOUIS, MISSOURI



© Copyright 2003 by the United States Government
No copyright claimed under Title 17 U.S.C.



NSN 7641014109694

NIMA REF. NO.



EFF. DATE 03135

TERMXUSLIAPV04

AIRPORT DIAGRAM

03023

MINNEAPOLIS-ST PAUL INTL (WOLD-CHAMBERLAIN) (MSP)

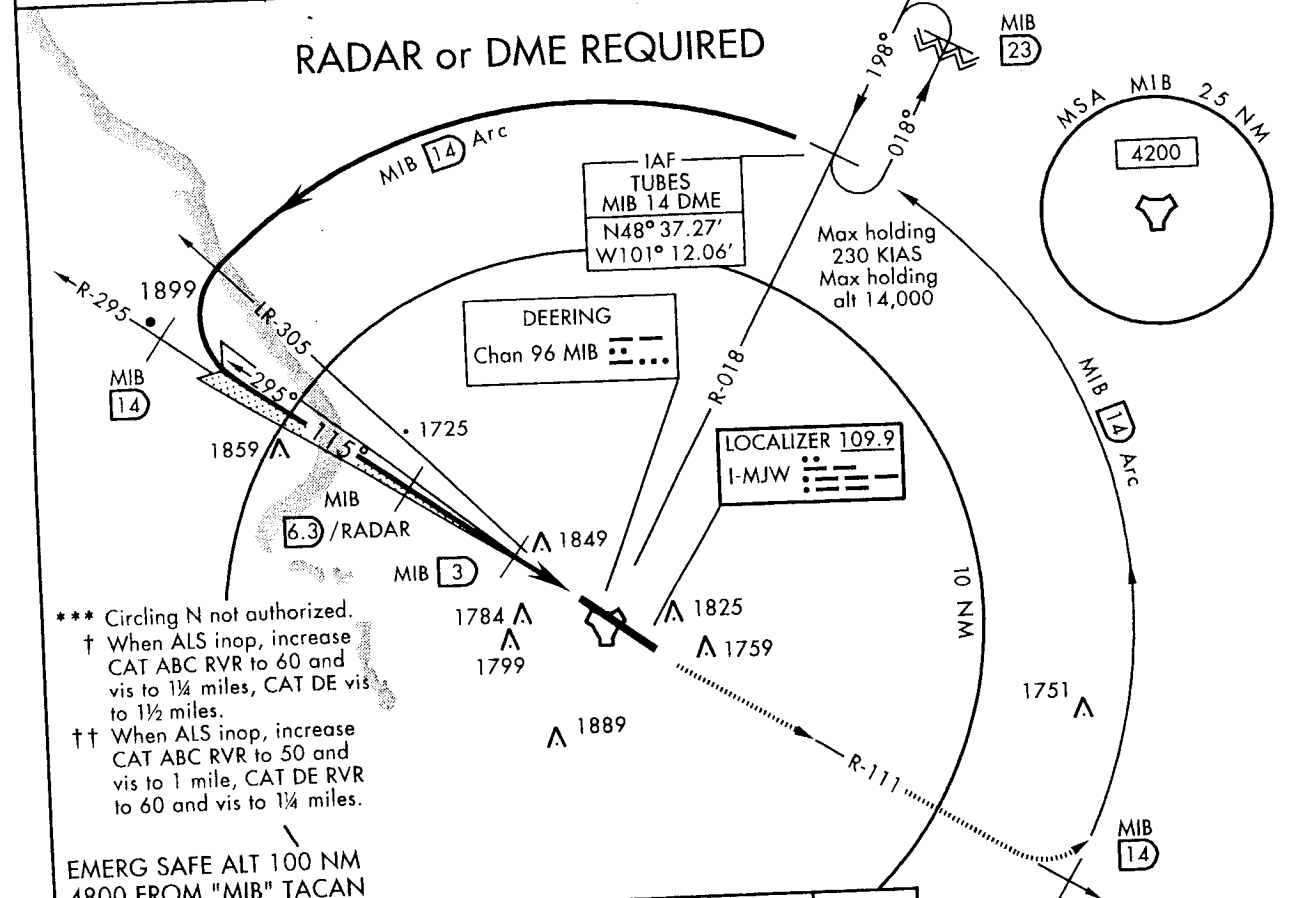
MINNEAPOLIS, MINNESOTA

MINOT, NORTH DAKOTA

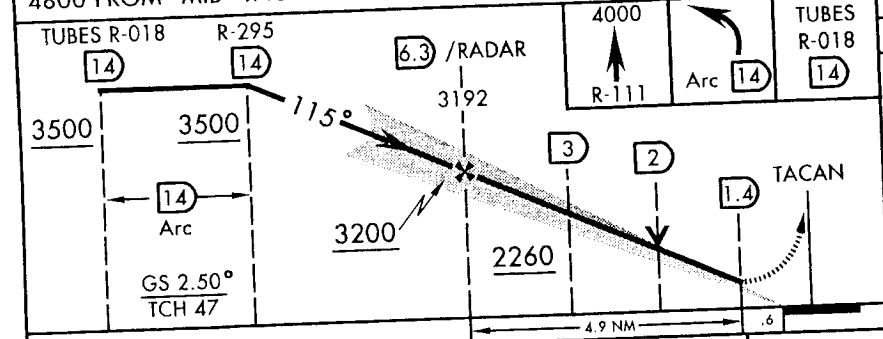
LOC I-MJW 109.9	APCH CRS 115°	Rwy ldg 13,200 TDZE 1668 Arpt Elev 1668	AL-5013 [USAF]	MINOT AFB (KMIB)
---------------------------	-------------------------	--	----------------	------------------

* When ALS inop, increase RVR to 40 and vis to ¾ mile.
 ** When ALS inop, increase CAT ABC RVR to 50 and vis to 1 mile, CAT D RVR to 60 and vis to 1¼ miles, CAT E vis to 1½ miles.

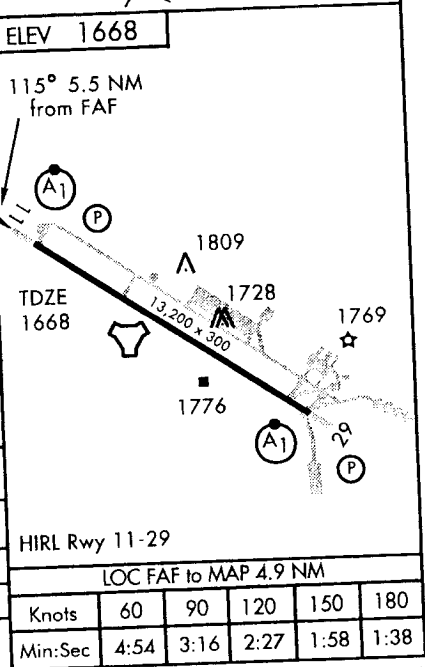
ATIS ★ 278.8	MINOT APP CON 119.6 363.8	MINOT TOWER 120.65 253.5	GND CON 134.0 275.8	CLNC DEL 326.2	ASR
------------------------	-------------------------------------	------------------------------------	-------------------------------	--------------------------	-----



*** Circling N not authorized.
 † When ALS inop, increase CAT ABC RVR to 60 and vis to 1¼ miles, CAT DE vis to 1½ miles.
 †† When ALS inop, increase CAT ABC RVR to 50 and vis to 1 mile, CAT DE RVR to 60 and vis to 1¼ miles.



CATEGORY	A	B	C	D	E
S-ILS 11*	1868/24		200	(200-½)	
S-LOC 11**	2060/24	392 (400-½)	2060/40	392 (400-¾)	2060/50 392 (400-1)
CIRCLING***	2100-1 432 (500-1)	2120-1 452 (500-1)	2120-1½ 452 (500-1½)	2220-2	552 (600-2)
S-ASR 11†	2100/50		432	(500-1)	
DME MINIMUMS					
S-LOC 11††	2020/24	352 (400-½)	2020/40	352 (400-¾)	
CIRCLING***	2100-1 432 (500-1)	2120-1 452 (500-1)	2120-1½ 452 (500-1½)	2220-2	552 (600-2)



MINOT, NORTH DAKOTA
03135

48° 25' N - 101° 21' W

MINOT AFB (KMIB)

ILS RWY 11

MINOT, NORTH DAKOTA

246

ILS Z RWY 29

MINOT AFB (KMIB)

LOC I-MIB 109.9	APCH CRS 295°	Rwy ldg 13,200 TDZE 1648 Arprt Elev 1668
---------------------------	-------------------------	---

AL-5013 [USAF]

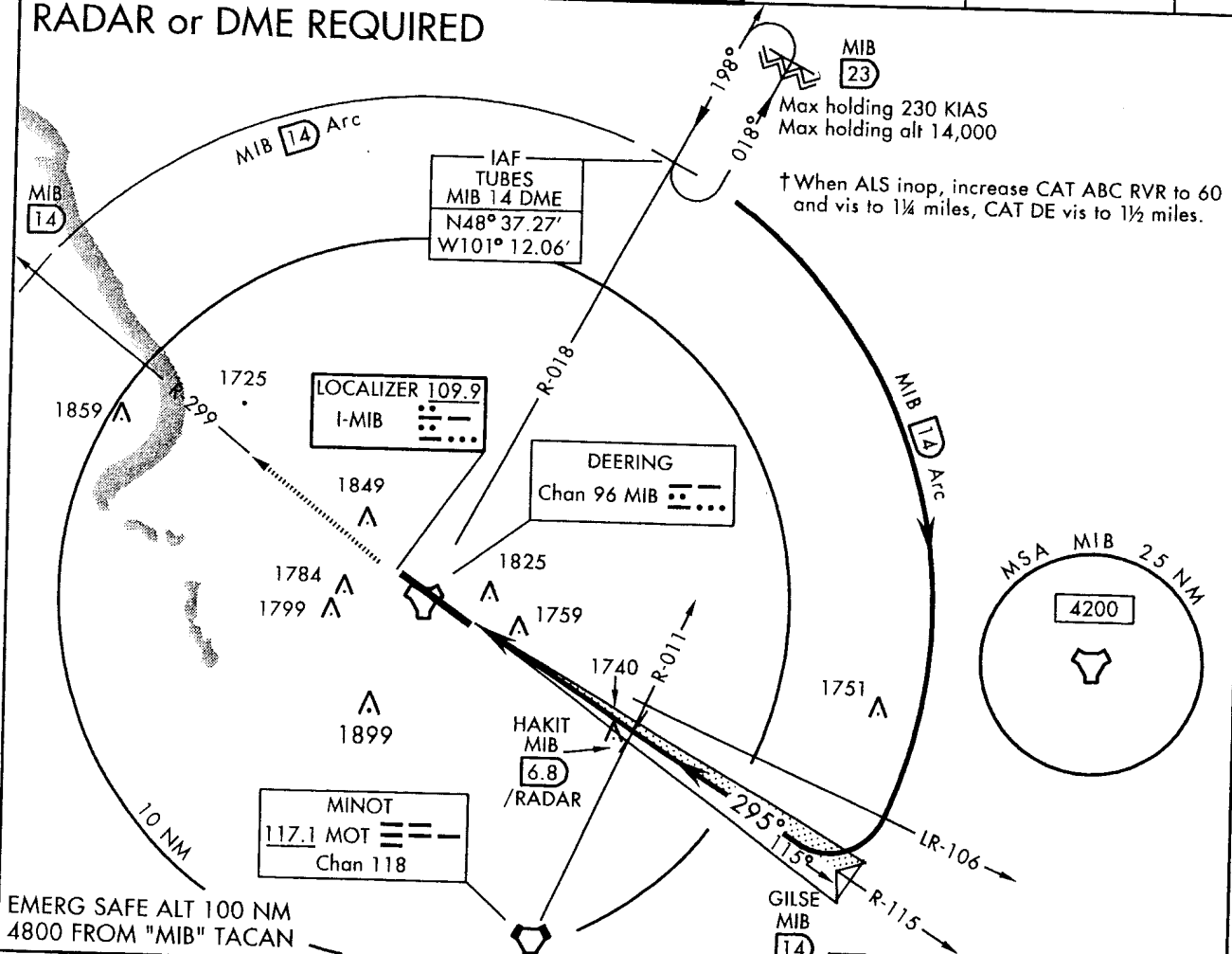
* When ALS inop, increase RVR to 40 and vis to 3/4 mile.
 ** When ALS inop, increase CAT ABC RVR to 50 and vis to 1 mile, CAT DE RVR to 60 and vis to 1 1/4 miles.
 *** Circling N not authorized.



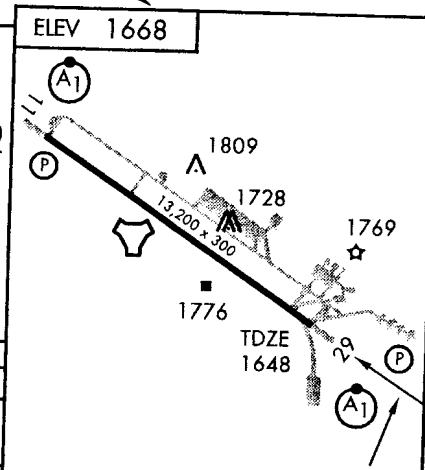
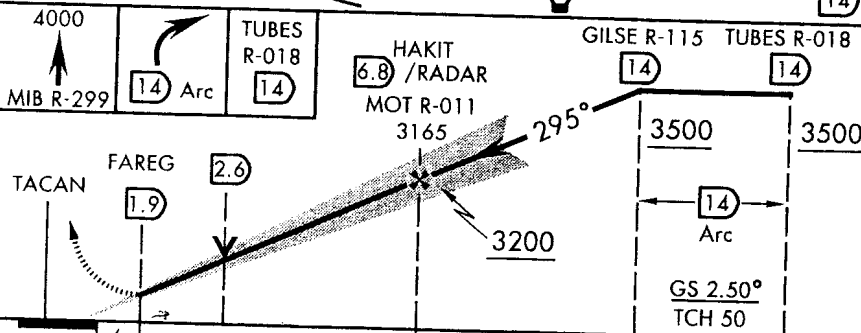
MISSED APPROACH: Climbing to 4000 via MIB R-299. At 14 DME arc north to TUBES and hold.

ATIS ★ 278.8	MINOT APP CON 119.6 363.8	MINOT TOWER 120.65 253.5	GND CON 134.0 275.8	CLNC DEL 326.2	ASR
------------------------	-------------------------------------	------------------------------------	-------------------------------	--------------------------	-----

RADAR or DME REQUIRED



EMERG SAFE ALT 100 NM
4800 FROM "MIB" TACAN



CATEGORY	A		B		C		D		E	
	1848/24	200	1848/24	372	200	200-1/2	2020/40	372	2020/40	372
S-ILS 29 *	1848/24		200		200-1/2					
S-LOC 29 **	2020/24	372	400-1/2		2020/40		372		400-3/4	
CIRCLING ***	2100-1	2120-1	2120-1 1/2		2220-2		552		600-2	
	432 (500-1)	452 (500-1)	452 (500-1 1/2)							
S-ASR 29 †	2080/50		432		(500-1)					

LOC FAF to MAP 4.9 NM					
Knots	60	90	120	150	180
Min:Sec	4:54	3:16	2:27	1:58	1:38

TACAN MIB Chan 96	APCH CRS 122°	Rwy ldg 13,200 TDZE 1668 Arpt Elev 1668
-----------------------------	-------------------------	--

AL-5013 [USAF]

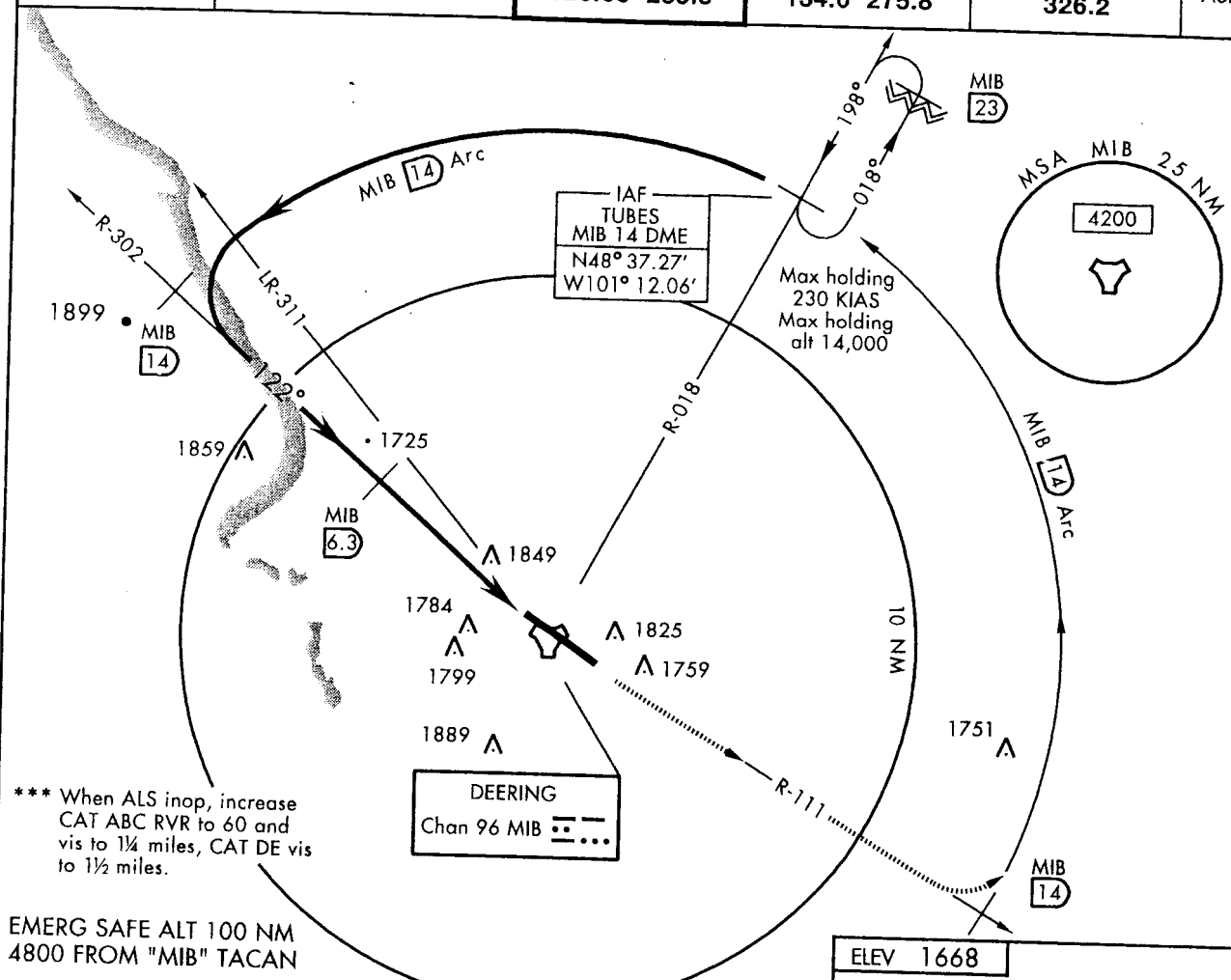
MINOT AFB (KMIB)

* When ALS inop, increase CAT AB RVR to 50 and vis to 1 mile, CAT C RVR to 60 and vis to 1/4 miles, CAT DE vis to 1/2 miles.
** Circling N not authorized.



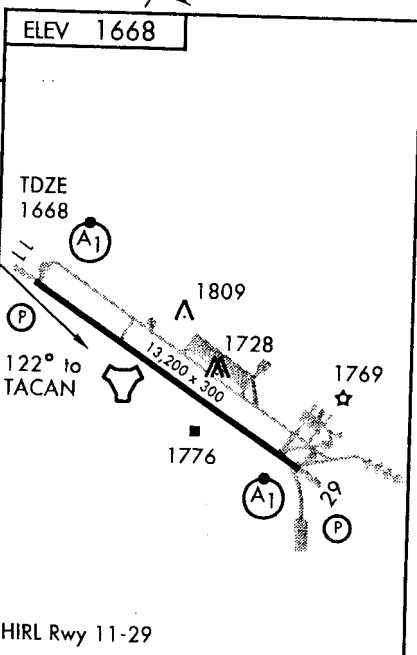
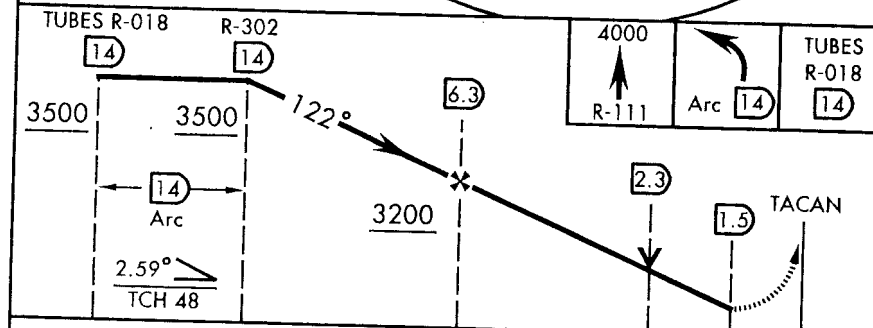
MISSED APPROACH: Climb to 4000 via MIB R-111. At 14 DME arc north to TUBES and hold.

ATIS ★ 278.8	MINOT APP CON 119.6 363.8	MINOT TOWER 120.65 253.5	GND CON 134.0 275.8	CLNC DEL 326.2	ASR
------------------------	-------------------------------------	------------------------------------	-------------------------------	--------------------------	-----



*** When ALS inop, increase CAT ABC RVR to 60 and vis to 1/4 miles, CAT DE vis to 1/2 miles.

EMERG SAFE ALT 100 NM
4800 FROM "MIB" TACAN



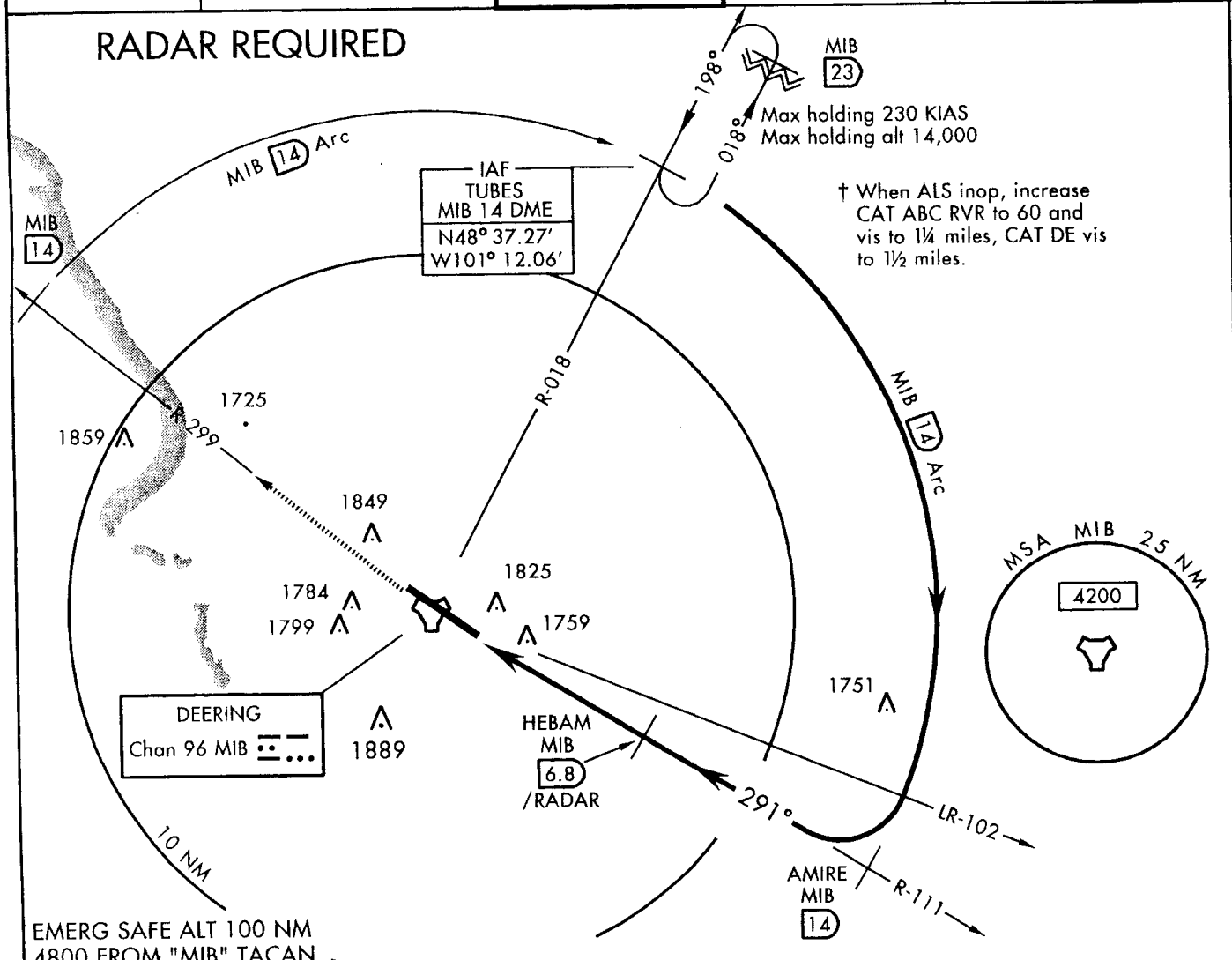
CATEGORY	A	B	C	D	E
S-11 *	2100/24 432 (500-1/2)	2100/40 432 (500-3/4)	2100/50 432 (500-1)		
CIRCLING **	2100-1 432 (500-1)	2120-1 452 (500-1)	2120-1 1/2 452 (500-1 1/2)	2220-2 552 (600-2)	
S-ASR ***	2100/50	432	(500-1)		

TACAN MIB Chan 96	APCH CRS 291°	Rwy ldg 13,200 TDZE 1648 Arprt Elev 1668	AL-5013 [USAF]	MINOT AFB (KMIB)
----------------------	------------------	--	----------------	------------------

* When ALS inop, increase CAT AB RVR to 50 and vis to 1 mile, CAT C RVR to 60 and vis to 1/4 miles, CAT DE vis to 1/2 miles.
 ** Circling N not authorized.

ALSF-1
 MISSED APPROACH: Climb to 4000 via MIB R-299. At 14 DME arc north to TUBES and hold.

ATIS ★ 278.8	MINOT APP. CON 119.6 363.8	MINOT TOWER 120.65 253.5	GND CON 134.0 275.8	CLNC DEL 326.2	ASR
-----------------	-------------------------------	-----------------------------	------------------------	-------------------	-----



4000 MIB R-299	TUBES R-018 14 Arc	HEBAM 6.8 /RADAR	AMIRE R-111 TUBES R-018 14 14	ELEV 1668	
TACAN	GEVGE 2.8	3200	3500 3500		
14 Arc	14 Arc	14 Arc	2.61° TCH 49		
6	4.9 NM				
CATEGORY	A	B	C	D	E
S-29 *	2080/24 432 (500-1/2)		2080/40 432 (500-3/4)	2080/50 432 (500-1)	
CIRCLING**	2100-1 432 (500-1)	2120-1 452 (500-1)	2120-1 1/2 452 (500-1 1/2)	2220-2 552 (600-2)	
S-ASR 29 †	2080/50 432 (500-1)				

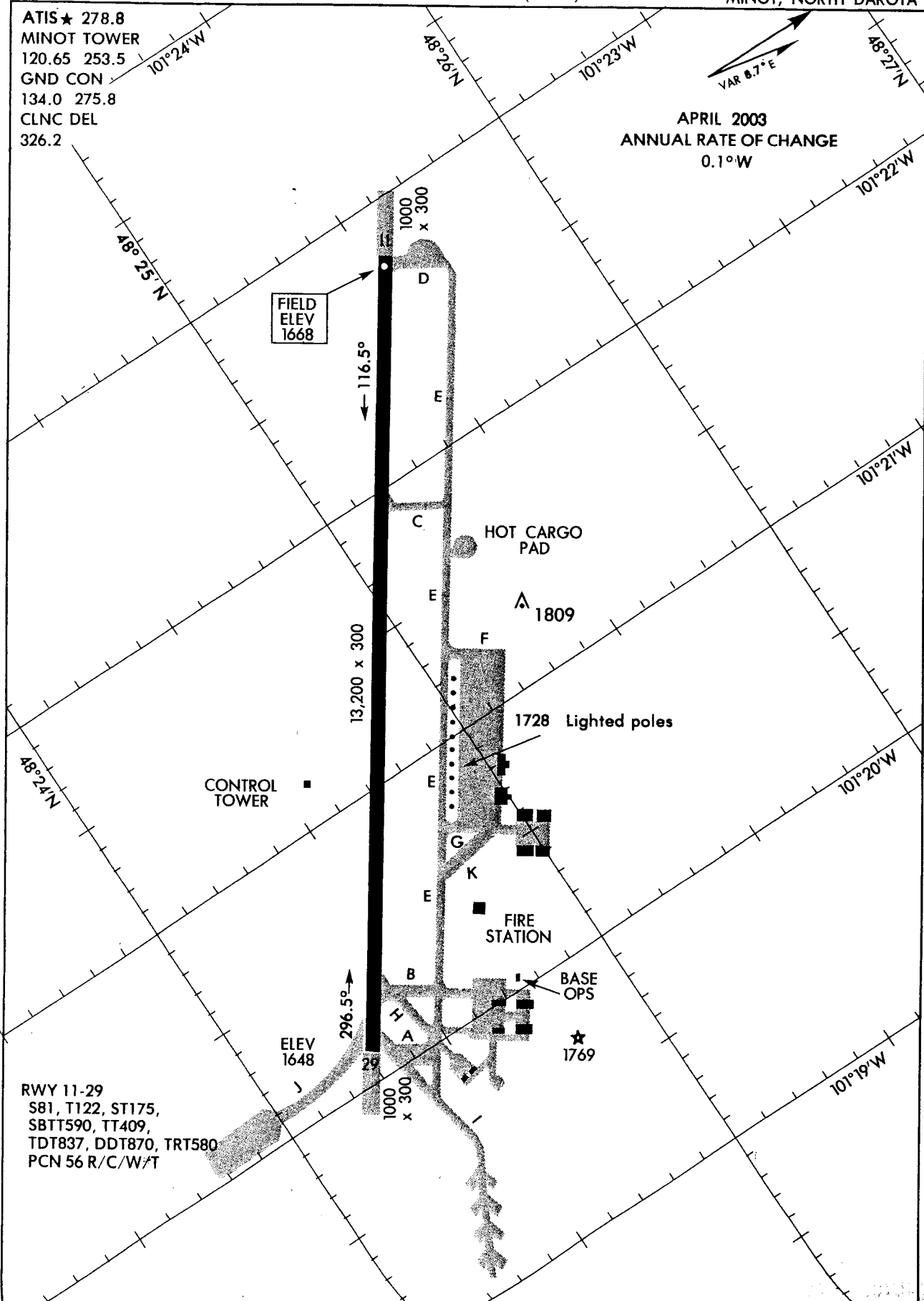
AIRPORT DIAGRAM

AFD-5013 (USAF)

MINOT AFB (KMIB)
MINOT, NORTH DAKOTA

ATIS ★ 278.8
 MINOT TOWER
 120.65 253.5
 GND CON
 134.0 275.8
 CLNC DEL
 326.2

APRIL 2003
 ANNUAL RATE OF CHANGE
 0.1°W



RWY 11-29
 S81, T122, ST175,
 SBTT590, TT409,
 TDT837, DDT870, TRT580
 PCN 56 R/C/W/T

AIRPORT DIAGRAM

MINOT, NORTH DAKOTA
MINOT AFB (KMIB)